

RONÁUTICA

MARINAS

References

PASSION
EXPERIENCE
INNOVATION

Marinas for life



Ronautica Marinas Presentation



PASSION
EXPERIENCE
INNOVATION

Marinas for life

This is Ronautica Quality Marinas S.L.U. , highly reputed and experienced manufacturer of Concrete and Aluminum Marinas from Spain. Kindly visit our website www.ronautica.com to know more about our company and the latest developments.

Ronautica Marinas is well known all over the world for its quality, simple designing, easy maintenance, shorter time for installation and very competitive pricing.

We are very much interested in qualifying ourselves to become one of your reliable vendors of high-quality Marinas, Breakwaters, Jetties, Pontoons, and gangways as well as all types of Floating Structures. We are pleased to introduce our company Ronautica Marinas with a request to give us an opportunity to be at your services.

With
3000sqm

Head Office and manufacturing facility for Aluminum structures

With
4580sqm

Precast yard for Concrete pontoons and breakwater manufacturing

Origins in
1989

Our first Marina in our home city, Vigo, as the first Marina manufacturer in Spain

15 Countries in which we have worked

Panama, Cuba, Mexico, United States of America, Ireland, Cyprus, Portugal...



From our origins in 1989 when we installed our first Marina in our home city, Vigo, as the first Marina manufacturer in Spain and one of the pioneers in Europe, we have now having installed hundreds of marinas in over 15 countries.



Since its inception, Ronautica Marinas has invested most of its profits in Research and Development for innovations to improve designs and quality and to make it affordable to the clients.

85% of the components that compose the marinas manufactured by Ronautica Marinas have been developed by the company itself.

Over 30 years in the marina business, Ronautica Marinas has been fulfilling various requirements of government and public sectors, private enterprises and Yacht Clubs designing and creating new berths and providing the required supporting services.

The involvement of the company in a project varies from the simple supply of the structures to the design, build and execution of any complex and more significant installation on turn-key basis anywhere in the world.

Following are a few important features of Ronautica Marinas.

DESIGN AND BUILT FOLLOWING STRUCTURES OF THE BEST QUALITY

- Marina / Floating Pontoons (Concrete and Aluminum)
- Fishing harbors., Sailing and rowing clubs. Special Platforms
- Military (navy) and Para-military (coast-guard, customs...) facilities on water
- Wave attenuators / Breakwaters
- Fixed aluminum walkways and special gangways.

OVERSEAS PRESENCE

Apart from Spain, Ronautica Marinas has very strong presence in USA, Central America, Ireland, Portugal and Middle East. We shall be glad to organize your visit to any of our projects for experiencing the quality of Ronautica Marinas.



Strategy based on investigation and development, business collaboration and internationalization.



References



PANAMA CITY

PANAMA

Ocean Reef Marina



Exclusivity and Luxury have never been so obvious in any development.

Ocean Reef residents are only those who enjoy the finer things in life, for them quality is not a desire, it is a reality. With this person in mind, Ocean Reef Islands have been created.

Being a member of the Ocean Reef community is a privilege, be part of the development of this project is a proud for our company.

PROJECT DESCRIPTION

Year of Installation

2019-2020

Dock System

Reinforced aluminum floating docks with HD polyethylene floats. Main dock 5,00 m width. Fingers up to 45 m long and 2,4 m width. Fuel Dock with concrete floats.

Capacity / Boat Size

210 Berths. / From 40' up to 200' (12m - 60m).

Anchoring System

150 steel piles Ø558 and 406mm diameter for a tide variation of 6,5 m



GUANACASTE
COSTA RICA

Marina Flamingo



PROJECT DESCRIPTION

Year of Installation

2021-22

Dock system

Aluminum pontoons 3 m width with polyethylene floats.

Capacity / Boat Size

182 Berths. / 45' up to 125'

Anchoring System

Steel piles, diameter 508 and 406 mm, 13 mm thickness.

Marina Flamingo is a world class Marina in a breathtaking setting designed and constructed by Ronautica Marinas. In addition, it is known to be one of the most important spots for anglers. The Marina offers 92 slips that can accommodate vessels up to 40 m (125 feet). The marina provides every modern amenity, convenience, and comfort to yacht owners and operators whether as a home port or destination offering high speed fueling, in slip pump out and Fiber optic internet.



The Marina Village comprises a mix of luxury villas and top-of-the line retail focused around the destination. Marina Flamingo will have a mixture of retail, commercial coffee shops and high-end restaurants as well as a medical clinic open 24-7. Everything you could want at your fingertips. The beauty of The Marina Flamingo is that it is located in the well-established Flamingo community. Steps away from one of the whitest, sugar like beaches in the country along with local restaurants and a Pura Vida lifestyle. Join us and be a part of our community and let's experience this together! We have limited slips and villas available.

CABO DE CRUZ
SPAIN

Fishing Harbour Cabo de Cruz



New State of the Art marina for aquaculture vessels.

5'00 m width, 2,25 m height floating breakwater with internal pile guides.

Concrete main pontoon and aluminium fingers with concrete floats to improve cost-effective and technical requirements' combination.

PROJECT DESCRIPTION

Year of Installation

2020

Dock system

120 m Floating breakwater 5,00 m width, 820 m concrete pontoons 3,00 m width and aluminum fingers with concrete floats.

Capacity / Boat Size

100 Berths for steel hull fishing vessels up to 72' length.

Anchoring System

21 steel piles 609x9,5 mm



BRANDENTON, FLORIDA
USA

Harbour Isle Marina



Introducing Sarasota-Bradenton's Newest Marina & Boathouse at One Particular Harbour Margaritaville located at 12300 Manatee Avenue West, Bradenton, FL 34209 in a spectacular setting on the Anna Maria Sound side of Perico Island.

The marina provides direct, no-bridge access to Anna Maria Sound, Tampa Bay and the Gulf of Mexico.

One Particular Harbour is being developed by Minto Communities in partnership with Margaritaville Holdings and RONÁUTICA MARINAS participates in this project as gangways, pontoons and fingers supplier.

PROJECT DESCRIPTION

Year of Installation

2018

Dock system

Gangways, longs 6.14, 9.14 and 24.5 m. 372 m Pontoons from 2.4 up to 3,2 m width. 267 m Fingers from 7.62 up to 10.3 m long. All in high-strength aluminum structure. Polyethylene floatation.

Capacity / Boat Size

59 Slips. / 37' up to 50' (11 m up to 15 m).

Anchoring System

49 Rings for Piles of 343 mm diameter for floating pontoons.



YENI ERENKÖY
 TURKISH REPUBLIC OF NORTH CYPRUS
Karpaz Gate Marina



With 300 berths and the ability to cater for yachts up to 60m, Karpaz Gate Marina offers a luxurious experience in a unique, unspoilt location for captains, crew and families.

Leisure facilities include the exceptional Beach Club, with 33m infinity pool and watersports centre, and Hemingway's Resto-Bar, featuring international and traditional Cypriot and Turkish cuisine.

Guests also have access to a fitness centre/gym and Mephisto Diving Centre.

Karpaz Gate Marina won Tyha International Marina of the Year Award 2017.

PROJECT DESCRIPTION

Year of Installation

2011

Dock System

870 m Aluminum pontoons from 2 m up to 3 m width. 432 m Aluminum Fingers from 6 m up to 10 m long. Polyethylene floats and concrete floats with high freeboard for large boats.

Mooring system

Med mooring system for big boats, fingers for small boats.

Capacity / Boat Size

300 Berths. / 20' up to 197' (6 m up to 60 m).

Anchoring System

54 Steel piles 12 m long, diameter 400, 450, 508 and 558 mm.



CITY OF TAVARES, FLORIDA
USA

Tavares Seaplane Base & Marina Dock



The City of Tavares lost its seaplane base and marina when Hurricane Irma hit in September 2017.

However, the City welcomed both planes and boats to the completely rebuilt Lake Tavares Seaplane Base and Marina.

The new docks, built by Ronautica Marinas in Spain and shipped to Tavares, are made from a higher-grade aluminum and have better pilings and connections.

PROJECT DESCRIPTION

Year of Installation

2020. Main Contractor: Rush Marine LLC

Dock system

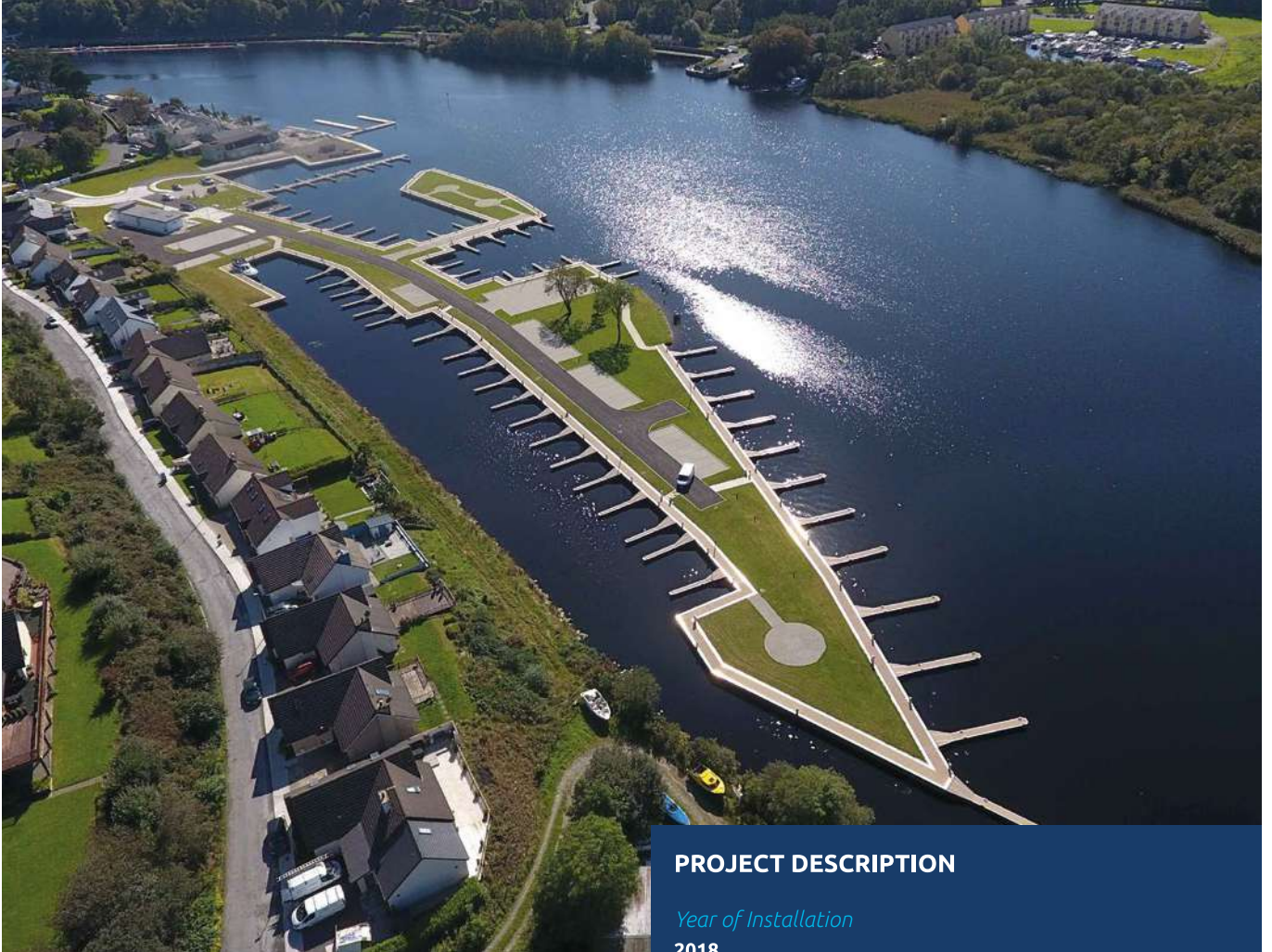
Supply of aluminum pontoons with polyethylene floats. 6 m wide for the marina (80 slips) and 4,5 m wide for seaplane dock (curve shape). 3 m wide for the Fueldock with pumps afloat.

Anchoring System

22 steel piles 530x12,7 mm.



BALLINA, COUNTY TIPPERARY
IRELAND
Derg Marina



Located in County Tipperary on the banks of the River Shannon, the marina is located on the channel that separates Lake Derg from the dam located downstream.

The design of this marina replaces the deteriorated existing wooden dock and fingers.

PROJECT DESCRIPTION

Year of Installation

2018

Dock System

875 m Fixed pontoons. 54 m Floating pontoons. 547 m Fingers. Polyethylene floatation. 870 Fender Barrier. All in high-strength aluminum structure.

Capacity / Boat Size

128 Berths. / 8 m up to 14 m (26' up to 46').

Anchoring System

Fixed pontoons leaning on steel beams. Floating pontoons and some fingers of the north extreme are anchored.



MARÍN
SPAIN

Placeres Dock Remodeling



PROJECT DESCRIPTION

Year of Installation

2021

Dock system

Aluminum pontoons with polyethylene floats. Main dock 3 m wide and 61 fingers for fishing and sport boats.

Anchoring System

21 steel piles 609x9,5 mm

In northwestern Spain, in the town of Marín in the province of Pontevedra, offloading dock with GRP decking.



VIRGIN GORDA

BRITISH VIRGIN ISLANDS

Las Biras Creek Resort Marina



PROJECT DESCRIPTION

Year of Installation

2020

Dock system

Aluminum fixed dock type RO5+ , 4 m wide 90 m long. Designed for Hurricane type 1 with boats, type 3 without boats.

Anchoring System

22 steel piles 530x12,7 mm.

Turn-key project including design, manufacturing and installation executed during pandemic time with our own equipment and staff working on site during 5 months. Fixed docks designed for Megayachts and Hurricane conditions. *"Take your loved one for a unique, intimate experience on the water with dinner on a yacht, private catamaran tour, a dance cruise, a picnic on a Boston Whaler, or a seafood dining experience that you can arrive to by boat at Biras Creek Resort".*



PEDRO GONZÁLEZ ISLAND
PANAMA

Pearl Island Marina



Located only a 40 miles off-shore south of Panama City, Pedro Gonzalez is the third largest island in the Pearl Islands archipelago in the Pacific sector of Panama.

In its more than 400 hectares, this paradise has 14 pristine beaches, and pristine water that is the playground of humpback whales, dolphins and sea turtles.

The private Marina on the west side of the La Peninsula offers 45 berths for yachting and sailing enthusiasts in the initial phase of development.

24 h services, bar, terrace, restaurant, transportation to/from residences, storage for kayaks, paddle board, jet ski, convenience store...

First Class Marina exclusive for residents in the private island.

PROJECT DESCRIPTION

Year of Installation

2014

Fixed Walkways

First stretch of 100 m of fixed walkway 4 m width. Fixed platform with restaurant and captaincy building. Second stretch of 50 m long and 3 m width ending with an octagon-shaped viewpoint from which the floating pontoons are accessed. Aluminum walkways on steel piles. Own design and execution.

Dock system

350 m Pontoons, 2.3 m width. 282 m Fingers 1.5 m width. 69 m Fingers, 1.8 m width. All made in high-strength aluminum structure with polyethylene floatation.

Capacity / Boat Size

45 Berths in phase I. / 40' up to 250' (12 m up to 76 m).

Anchoring System

77 Steel piles, diameters 406, 610 and 660 mm for a tidal load of 7 m.



COMBARRO
SPAIN

Combarro Sport Marina



Marina located on the north coast of the Ría of Pontevedra, awarded with PIANC prize "2012 Marina Excellence Design Jack Nichol Award".

PIANC is the World Association for Waterborne Transport Infrastructure. Using the words of the jury : *"Combarro Marina was ranked highest as a facility that is safe and easy for boaters to use, well-designed, attractive and appealing to boaters, and utilizes materials and construction methods that are environmentally friendly and minimize impacts on the environment"*.

The design of Combarro Marina reflects not only the needs of the boaters it serves, but the surrounding community and environment. Thus, the Recreational Navigation Commission awards the 2012 Marina Excellence.

PROJECT DESCRIPTION

Year of Installation

2007

Dock System

160 m Concrete breakwater, 4 m width. 870 m aluminum pontoons from 1.5 m up to 4 m width with concrete and polyethylene flotation. 1065 m aluminum fingers from 5 m up to 12 m long.

Capacity / Boat Size

310 Berths. / 26' up to 66' (8 m up to 20 m).

Anchoring System

Seaflex with 12.5 t concrete blocks on the floating breakwater. 63 Steel piles Ø508 mm of 18 m long for floating pontoons.



VIGO
SPAIN

Davila Sport Marina



Marina reference in North of Spain for Megayachts. Inaugurated for the Volvo Ocean Race 2005.

Pontoons inside the 77000m² of water surface are made of reinforced aluminum with concrete and polyester floats with two different freeboards depending on the length of the boat.

Entry to the marina is protected with 320 m of floating concrete breakwater 4.3 m width.

The marina includes first class services for users including dry storage, reparation area, restaurant, dive school, CCTV, control access and all utilities for being one of the best marinas in Spain.

PROJECT DESCRIPTION

Year of Installation

2005

Dock System

320 m Concrete Breakwater, 4.30 m width. 1594 m Aluminum pontoons from 2 m up to 4 m width . 420 m Aluminum fingers, longs 8 and 10 m. High freeboard concrete floats up to 1 m for pontoons and polyester floats for fingers.

Capacity / Boat Size

150 Berths. / 12 m up to 80 m (39' up to 263')

Anchoring System

Seaflex with 12 t concrete blocks on the floating breakwater. Steel piles up to 810 mm diameter and 32 m long for floating pontoons.



WEST SUSSEX, SHOREHAM
UNITED KINGDOM

Sussex Yacht Club



Second phase of the refurbishment of one the oldest sailing clubs in England.

SYC is first and foremost a members club with unrivalled facilities.

Yachts of all sizes call the club home, with both rallying and racing strongly supported, as is the dinghy section where particular attention is given to encouraging youth sailors.

PROJECT DESCRIPTION

Year of Installation

2020

Dock System

Aluminum gangway, 170 m aluminum pontoons with polyethylene floats. Fingers up to 10 m long.

Capacity / Boat Size

34 Berths. / 8 m up to 12 m (24 up to 36)

Anchoring System

Steel piles



SAN CARLOS
PANAMA

Vistamar Marina



Vista Mar Marina has constructed a world-class marina in Panama utilizing innovative designs, the highest quality materials, state of the art engineering and luxury amenities, all combined with unparalleled and personal customer service.

Located in San Carlos, 42 nautical miles southwest of the Panama Canal.

Outstanding marina facilities provide all the services you may need such as drinking water, electrical connections, forklifts, dry storage areas, fuel supply, Internet access, an exclusive panoramic restaurant with bar and sea view, 24 hour reception, laundry, security, quick store and more.

PROJECT DESCRIPTION

Year of Installation

2016

Dock system

3 Gangways 24 m long. 1091 m Pontoons from 2.3 m up to 6 m width. 846 m Fingers, longs 12, 18, 21 and 27 m. All in high-strength aluminum structure. Polyethylene floatation

Capacity/ Boat Size

206 Berths. / 50' up to 200' (15 m up to 61 m).

Anchoring System

116 Steel piles 16 m long, diameters 406 and 508 mm.



CAMPECHE
MEXICO

Campeche Country Club Marina



Located at southwest of the Campeche city.

This is a turn-key project including design, manufacturing and installation of pontoons, services and piling.

Design provided by Aquatica Ingeniería includes fixed breakwater and artificial beach.

Execution time: 5 months.

PROJECT DESCRIPTION

Year of Installation

2016

Dock System

180 sqm of fixed platform at the entrance. 3 Gangways, 16 and 18 m long. 410 m Pontoons, 2,35 up to 6 m width. 259 m Fingers from 6 m up to 18 m long. All in high-strength aluminum structure. Polyethylene floats. 60 Jet-Ski polyethylene floating platforms.

Capacity / Boat Size

90 Berths, 60 Jet-Ski. / 26' up to 72'. (8 m up to 22 m).

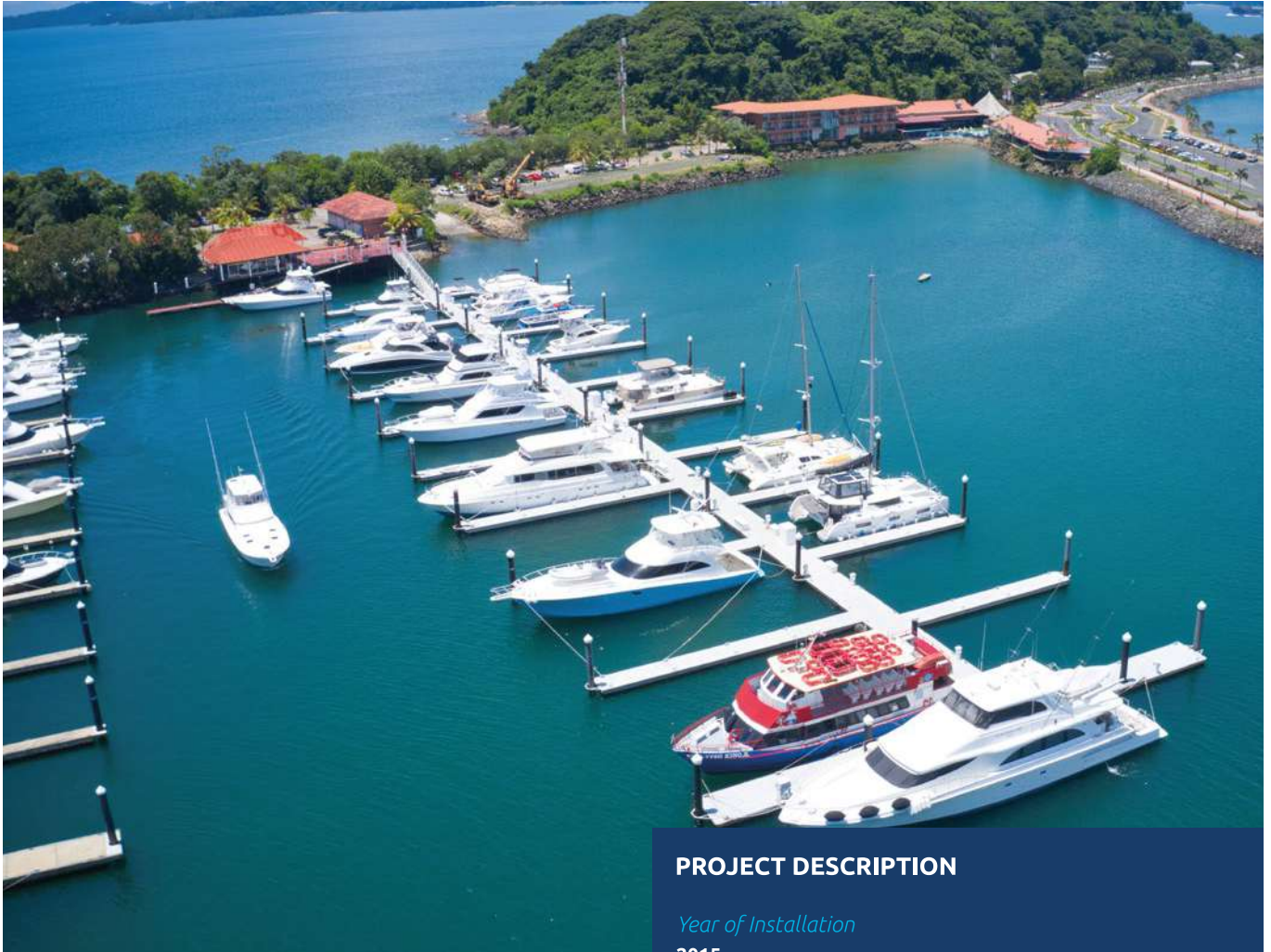
Anchoring System

35 Steel piles 508 and 410 mm diameter, 11.5 up to 16 m long. Type of soil: rock.



PERICO ISLAND, AMADOR
PANAMA

La Playita de Amador Marina



Concrete pontoons for the second phase expansion of this "Boutique Marina".

Located in the nautical area of the Costway, it is rated as the best marina of Panama City in terms of quality of the floating docks and personalized care to the clients.

Concrete pontoons made in Spain and shipped to Panama.

Execution time: 8 months

PROJECT DESCRIPTION

Year of Installation

2015

Dock System

1 Aluminum gangway of 20 m long x 2 m width. 192 m Concrete pontoons, 3 m width. 352 m Concrete fingers, 1.8 m width. Both 16 m up to 22m long, produced in one piece.

Capacity / Boat Size

40 Berths. / 50' up to 120' (15 m up to 37 m).

Anchoring System

32 Steel piles, diameter 406, 457 and 508 mm.



CONIL
SPAIN

Fishing Harbour Conil



Turn-Key Project including dredging, piling, manufacturing and installation of concrete pontoons and aluminium fingers for the fishing vessel dedicated to the famous Almadraba Tuna fishing technique.

PROJECT DESCRIPTION

Year of Installation

2019

Dock system

120 m Floating breakwater 5,00 m width, 820 m concrete pontoons 3,00 m width and Aluminum fingers with concrete floats.

Capacity / Boat Size

100 Berths for steel hull fishing vessels up to 72' length.

Anchoring System

97 un. steel piles Ø 610-813 m.



BAIONA
SPAIN

Marina Baiona



Located in a privileged enclave, in the historic center of the Real Villa de Baiona.

It brings together splendid conditions for sport sailing, and is a scale required for pleasure craft in transit to Portugal, the Mediterranean, the Canary Islands and the Caribbean.

PROJECT DESCRIPTION

Year of Installation

2002

Dock System

Aluminum gangway, 12 m long. 204 m Concrete Breakwater, 4 m width. 1286 m Aluminum pontoons 2,5 m up to 3 m width. 1142 m Aluminum fingers, long 6 m up to 12 m. Concrete floatation for pontoons and Polyester for fingers.

Capacity / Boat Size

344 Berths. / 8 m up to 25 m (26' up to 80').

Anchoring System

Concrete blocks and chains for the floating breakwater. and 79 steel piles, diameter of 508 and 473 mm and 13 m long for pontoons and fingers.



GARACHICO, TENERIFE

SPAIN

Port Garachico



The Port of Garachico, in the north of Tenerife, is located in an area open to the waves coming from the direction arch WNN-ENE.

The design has taken into account the effect of breakage that high-level waves can have on the maneuver of vessels in relatively small draft areas.

It is protected from waves and currents by a dike 650 meters long. It has 160 berths on pontoons for sports boats up to 15 meters in length, in addition to 40 berths for fishing vessels up to 8 meters in length.

PROJECT DESCRIPTION

Year of Installation

2011

Dock System

7 Gangways, 8 m long. 444 m Pontoons, 2 m width. 440 m Fingers of 6 m up to 10 m long. All with high-strength aluminum structure. Polyethylene floatation.

Capacity / Boat Size

200 Berths. / 20' up to 50' (6 m up to 15 m).

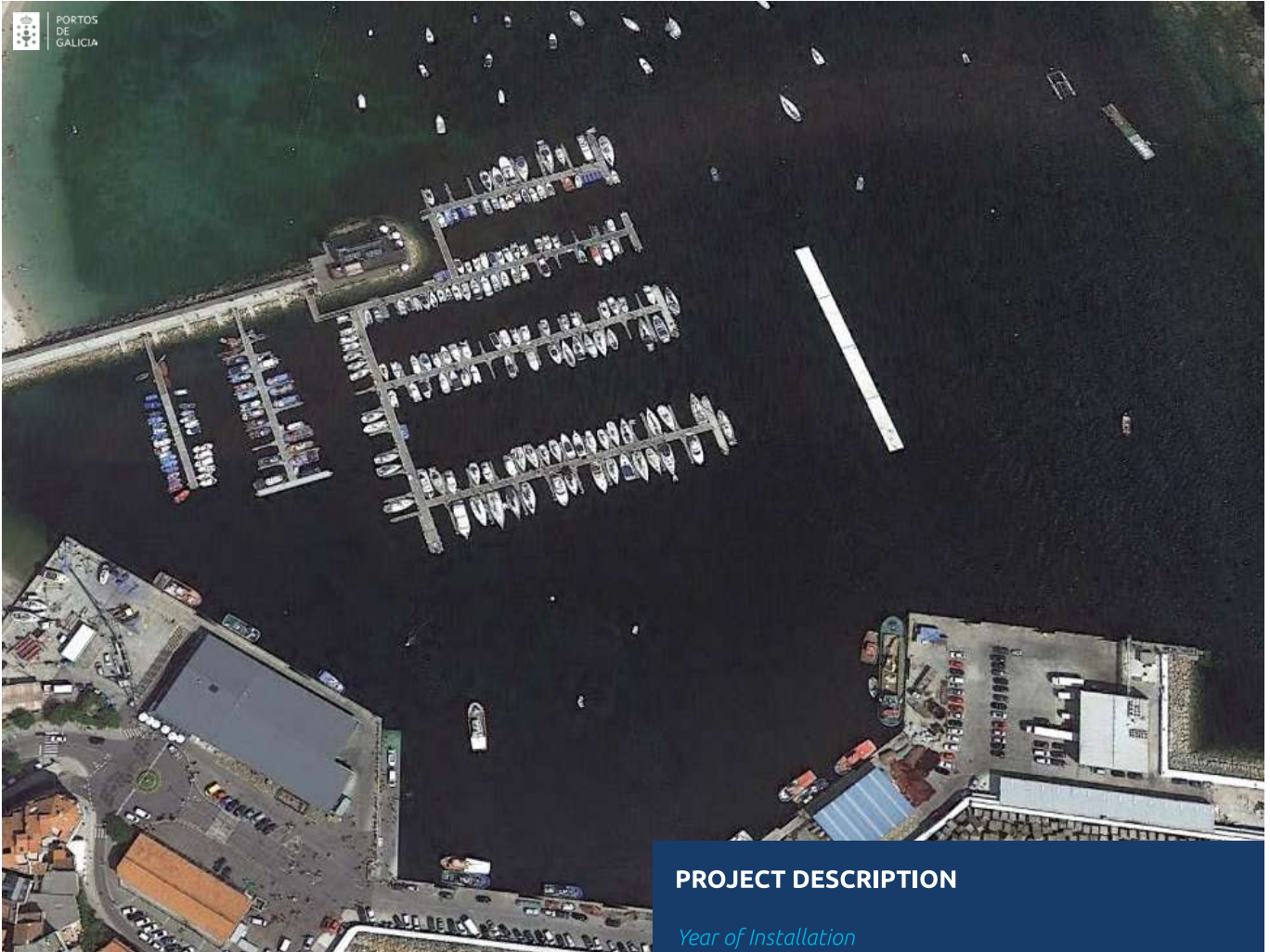
Anchoring System

22 Steel piles 12 m long, diameter 508 mm.



PORTONOVO
SPAIN

Floating Breakwater Portonovo



Floating dock to improve the shelter of the port of Portonovo in front of the wind waves.

Consisting in the construction and installation of 80 m of floating concrete breakwater by means of 4 modules of 20 m long, 5 m wide, 1.8 m of prop, lateral keels, 69 t weight, lower concrete slab. These works will be based on anchoring lines formed by a 40 mm chain with a length of 50 m.

Ronautica Marinas has manufactured in its facilities, transported and installed, the floating concrete breakwaters supplied to the construction company López Cao within the work of improving the shelter in the port of Portonovo promoted by Portos de Galicia.

PROJECT DESCRIPTION

Year of Installation

2017

Dock System

80 m Concrete floating breakwater in modules of 20 m long, 5 m width and 1.8 m high.

Anchoring System

16 mooring lines 50 m chain Ø40 mm with concrete blocks 12.5 tn.



FINISTERRE
SPAIN

Finisterre Harbour Floating Breakwater



Piling works and installation provided by General Contractor.

PROJECT DESCRIPTION

Year of Installation

2018

Dock System

**4 x wave attenuator 65 ft long, 16 ft width, 6,8 ft height.
Internal piles guides. Weight: 75 Tn/un**



LA TOJA
SPAIN

Floating Breakwater Marina CR La Toja



PROJECT DESCRIPTION

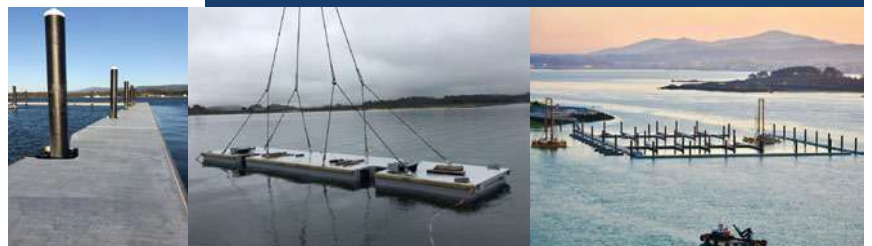
Year of Installation

2018

Dock System

Floating breakwater 505 feet long in two alignments. Internal pile guides. Pieces 10' and 13' width. Weight: 40-45 Tn/un.

Installation, piling works and floating docks provided by General Contractor.



RIVEIRA
SPAIN

Floating Breakwater Ribeira Harbour



Breakwater designed for waves of period 4.5 seconds and HS 1.5 meters. It protects the fishing pontoons of the north dock of the port of Ribeira from the waves of the easterly wind.

PROJECT DESCRIPTION

Year of Installation

2018

Dock System

Floating concrete breakwater 20 m long, 5 m wide, 2.25 m height (65.6' x 16.4' x 7.4')

Anchoring System

Chain and concrete blocks



AYAMONTE

SPAIN

Floating Dock for Ferry Ayamonte



New jetty for the passenger boarding terminal at the port of Ayamonte. With dimensions of 30 by 3 metres and almost 1 metre of freeboard, suitable for the type of vessel in use and which will facilitate the safe disembarkation of passengers.

Access to the pontoons will be via a 27-metre-long gangway. In addition, a stainless steel handrail will be installed around the pontoon.

PROJECT DESCRIPTION

Year of Installation

2019

Dock system

Floating concrete pontoon line 100' long, 10' wide, 36" freeboard with bottom concrete slab.

Anchoring System

Internal and external HDP steel piles. 20' width platform on gangway's landing.



COFRADÍA DE PESCADORES DE VIGO

SPAIN

Breakwater and Pontoon Bouzas



Since its creation, the moorings have been underused and remained empty for most of the year, adding to this a high maintenance cost for their conservation.

Thanks to the installation of a new section of floating concrete pontoon, the entire port area has been improved, adding new berths and ensuring safer conditions also for the rest of the berths, significantly reducing the impact of the wind waves generated during winter storms and by the traffic of other vessels. The works carried out included the driving of new steel piles, 44 meters of concrete breakwater pontoon, a 12 meter special module without steel reinforcement, 5 aluminium fingers and two access walkways.

PROJECT DESCRIPTION

Year of Installation

2020

Dock System

Floating breakwater 13' wide with internal pile guides. Special concrete pontoon 10' wide with no metallic reinforcement.

Capacity/ Boat Size

150 Berths. / 12 m up to 80 m (39' up to 263')

Anchoring System

Seaflex with 12 t concrete blocks on the floating breakwater. Steel piles up to 810 mm diameter and 32 m long for floating pontoons.



GALICIA
SPAIN

Expansion and improvement of Rianxo, Pobra and Sada Ports



PORTOS
DE
GALICIA



PROJECT DESCRIPTION

Year of Installation

2021-2022

Dock System

Aluminum docks with polyethylene and concrete floats.

Anchoring System

Steel piles from 508 mm up to 609 mm diameter.

Complete refurbish and improvement of 3 fishing Ports. Including increase of slips and size of fishing boats with new fingers, substitution of the old hardwood by new composite decking, change of floats and implementation of new services electrical, plumbing and access control. Works executed with equipment, staff and pontoons by Ronáutica Marinas acting as General Contractor for Portos de Galicia authority.



ASTURIAS
SPAIN

Temporary moorings in the port of Viavélez



The port of Viavélez is one of the most attractive maritime spots on the Asturian coast due to its integration in the coastal environment and to the fact that it preserves its aesthetic values and natural landscaping.

Studies carried out have revealed the possibility of improving port operations in favorable weather seasons through the installation of removable floating pontoons in the outer port area, in which the mooring of sports boats in a safe way.

Ronautica Marinas executed this work in 2017 and every season pontoons are removed and reinstalled successfully since 2017.

PROJECT DESCRIPTION

Year of Installation

2017

Dock System

Aluminum docks with polyethylene floats.

Capacity / Boat Size

54 boats up to 40' length.

Anchoring System

Steel piles from 508 mm diameter.



GERÉS
PORTUGAL
Private Docks



During last 10 years Ronautica Marinas have been designing and installing made to measure private docks for the owners of nice properties at the river Cávado in the natural park of Peneda Gerés, Portugal.

These pontoons are equipped with many accessories to enjoy the practice of nautical sports and swimming. Tailored solutions for new state of the art private docks.

PROJECT DESCRIPTION

Year of Installation

2012-2020

Dock System

Aluminum docks with polyethylene floats.

Capacity / Boat Size

Up to 3 boats 30' and two jetsky.

Anchoring System

Bi-articulated gangway.



HOBE SOUND, FLORIDA

USA

Loblolly Marina Replacement



Entire replacement of the old wood marina of this exclusive neighbour.

Ronautica Marinas designed new mooring system, including supports for RO5 fixed docks reducing number of concrete piles necessary, and manufactured and supply to the General Contractor Rush Marine all the fixed, floating docks and articulated fingers.

Delivery time: 4 months

PROJECT DESCRIPTION

Year of Installation

2022

Dock System

Aluminum fixed and floating docks.

Capacity / Boat Size

80 boats up to 60' length.

Anchoring System

Steel piles 406 mm (16") and 356 mm (14") for the floating docks and precast piles 14" For the fixed docks.



MÁLAGA
ESPAÑA

Fishing Boats Docks Facilities



Turn key Project for the Málaga Port Authority. Total Budget: 2,2 M€ including new dock for fishing vessel with MEP , off loading platform in land, fuel deposits and dispensers and new building for fish market and services.

PROJECT DESCRIPTION

Year of Installation

2023

Dock System

Concrete floating docks 8 m (26 ft) width.
Total length: 160 m (525 ft). Height: 1,8 m (6 ft) Freeboard: 800 cm (31" ½). Concrete slab on bottom side. Size and weight of each individual module: 20 m (65 ft) long x 4 m (13 ft) width and 75 Tn, connected laterally for create pieces 8 m width. Live load: 5 KN/m²

Accesories

D400 fenders. 2 internal pile guides on each 20 m long module. Aluminum access gangways with liveload 500 kg/m² designed for traffic of fish unloading vehicles.

Capacity / Boat Size

Steel hull fishing ships. Design docking load: 31 Tn

Anchoring System

22 units of steel piles 762 mm diameter (30") 12,7 mm (1/2 ") thickness. Minimum depth embedded in the soil: 20 m.



PANAMÁ CITY
PANAMÁ

Flamenco Marina. Refurnishing



Building in 1998, what today Martina Flamenco is the largest and most complete private marina complex in the Republic of Panama that also offers services oriented to Tourism and Entertainment. Fuerte Amador is in constant development and receives visitors from all over the world who enjoy the variety of services available at its facilities that includes restaurants, shops, áreas for events, charter services, stores with equipment and materials for yachts, Hop on/Hop off stop and Duty Free.

Ronautica Marinas execute, in different phases to not disturb the marina activity, the renovation of the docks installing state of the art aluminum floating docks.

PROJECT DESCRIPTION

Year of Installation

2023

Dock System

Mainwalkway made of 20' / 3,00 m width reinforced aluminum floating pontoons with polyethylene floats. Additional fingers 10' / 1,5 m. wide, 60'/18m long. Especial floating platforms for electrical distribution panels.

Capacity / Boat Size

Slips for boats 70' long.

Anchoring System

Steel piles. Pile guide rings made to measure to fit with existing mooring configuration.





WWW.RONAUTICA.COM

(+34) 986 607 235 info@ronautica.com
2ª Fase Parque Empresarial de Areas - Parcelas 1,2 y 3
36711 Areas - Tui (España)



DESIGN MANUFACTURING AND COMMERCIALIZATION
OF FLOATING STRUCTURES AND ACCESSORIES
FOR MARINAS AND FISHING HARBOURS